

## Akihiro Hasegawa Inaugural Solo Exhibition, *Yomogi & COMP*



よもぎとコンプ

Akihiro Hasegawa Solo Exhibition  
2022. 6. 25 sat - 8. 6 sat

√k  
√K Contemporary

√K Contemporary (Root K Contemporary, Tokyo) is proud to present current Tokyo University of the Arts Masters student and emerging artist, Akihiro Hasegawa's inaugural solo exhibition, *Yomogi & COMP*.

Spanning two floors, from the basement to the 1<sup>st</sup> floor of the gallery, the exhibition will introduce various works drawn from personal experiences, from a series formed by Hasegawa's encounters with faith, to portraits that address ideas of human existence.

Born into a family-run Tendai sect temple, Hasegawa underwent training in Mt. Hiei. Shaped by these unique attitudes towards life, death, and humanity's very existence, Hasegawa's works take a wide-angled approach to the nature and existence of emotions, thoughts, matter, and life, and offer a glimpse of the artist's unique perspectives gained through his experience with the Buddhist priesthood. Set to be on exhibit, *Repentance, Raigō, Prayer, or the Horizon* (2022, previously exhibited at KUMA Exhibition 2022. Fig 1) presents chimeric, distorted figures reminiscent of Buddhist priests in vibrant hues. Painted recto-verso on acrylic board, the work sublimates, both, the gap and connection between this world and the next. On the other hand, the "life" these figures depict illustrates the expectations humanity holds in the face of its bilateral nature, life's strength and danger, and the relativity of existence.

As an increasingly digitalized, "conceptual" society of the present succeeds its feudalistic, "materialist" past, the prophetic nature of Hasegawa's work, in many ways, offers a vision that urges viewers to reconsider their view of the future.

### Special Events

Special events, from gallery talks featuring special guests to live painting, sutra chanting sessions and more, will be held during the exhibition.

Further details will be announced on the √K Contemporary website or social media profiles.

Exhibition Website | [https://root-k.jp/exhibitions\\_en/akihiro\\_hasegawa\\_exhibition\\_2022/](https://root-k.jp/exhibitions_en/akihiro_hasegawa_exhibition_2022/)

TW @rk\_contemporary | FB @rootkcontemporary | IG @rk\_contemporary

### On the Exhibition Title, *Yomogi & COMP*

*There is a complete meal supplement called COMP. Apparently, you can survive off just eating that.*

*On the other hand, there is yomogi<sup>1</sup>.*

*Although Yomogi grows just about everywhere, we don't really eat it. It's probably just about yomogi rice cakes that we'd eat.*

*Frankly, you wouldn't eat it for its nutritional value, but more for its flavoring and coloring of rice cakes.*

*In other words, COMP is consumed for the purpose of "nourishment", while yomogi is eaten for its "aesthetic and flavor".*

*I believe the ways in which we look and behave in the world, very much resemble these two ideas.*

*I see COMP as understanding, while yomogi as "zatsumi" (miscellaneous, unnecessary flavors) and "nebulous".*

*I believe feelings of "realization" and "contentment" occur when these two concepts overlap.*

*We, humans, live to feel content.*

*These are the eyes with which I view art.*

*\*"Yomogi & COMP" is a concept my friend, Takatoshi Yoshida, and I came up with.*

Akihiro Hasegawa

---

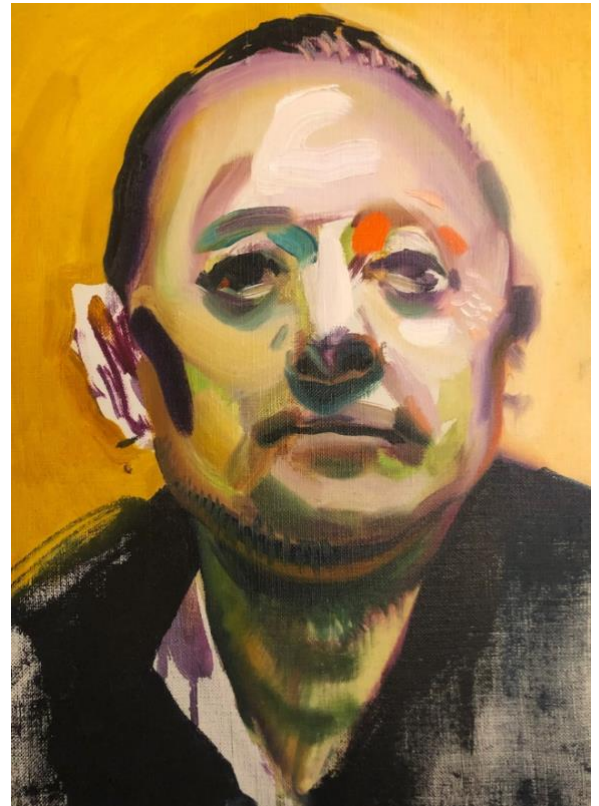
<sup>1</sup> Also known as Japanese mugwort, Korean wormwood, Korean mugwort or first wormwood. Its scientific name is *Artemisia princeps*.

Exhibiting Works

①



②



③



④



⑥



⑤



- ① *Repentance, Raigō, Prayer, or the Horizon*, (2022) Oil on acrylic and board 162.1 x 194 cm  
② *Untitled*, (2022) Oil on canvas 33.4 x 24.4 cm  
③ *Untitled*, (2022) Oil on canvas 112 x 145.6 cm  
④ *Untitled*, (2022) Oil on canvas 50.4 x 60.8 cm  
⑤ *Untitled*, (2022) Oil on canvas 130.3 x 97.7 cm  
⑥ *Untitled*, (2022) Oil on canvas 33.4 x 24.4 cm



Artist | Akihiro Hasegawa (長谷川彰宏)



1997: Born in Tsu City, Mie Prefecture

2007: Enters the Buddhist priesthood at Saikyo Temple, Mt. Hiei

2016: Enters the Tokyo University of the Arts, Faculty of Fine Arts, BFA Department of Design

2019: Completes Shidokegyo (Four Preliminary Practices) at Saikyo-ji Temple, Mt. Hiei (the general headquarters of the Tendai Shinsei sect)

2020: Enters the Tokyo University of the Arts, Graduate School of Fine Arts, MFA Department of Design, Planning Theory Research Institute

Artist Website | <https://www.akihiro-hasegawa.com/>

IG | akihiro\_hasegawa\_jp

TW | @Akhr0g

Akihiro Hasegawa (b. 1997, Mie Prefecture, Japan) is a contemporary artist based in Tokyo, Japan. A successor to a family-run temple, Hasegawa entered the Buddhist priesthood at Saikyo Temple, Mt. Hiei at 10 years old. By 19 years old, he enrolled in the Tokyo University of the Arts, the most prestigious art school in Japan, which, considering its notoriously low acceptance rate, is a rare and striking accomplishment. In 2019, he completed the Buddhist Shidokegyo (Four Preliminary Practices) and, in the following year, began his master's degree at the Tokyo University of the Arts. His works mainly depict human figures. Eclectic and elaborate, they traverse a range of styles, from Byzantine oil pastel drawings to realistic portraits and experimental multilayered acrylic plate paintings. Overarching themes of his works include Buddhist imagery, ideas regarding the existence and potential of space and time in painting, and an inherent curiosity and affinity for human subjects. Hasegawa is an [ALT Project](#) creative director and a recipient of the distinguished [Kuma Foundation grant](#).

**[Group Exhibitions]**

- 2017 [SICF18](#) (18th Spiral Independent Creators Festival) Spiral Hall, Spiral Garden, MINA-TO (Tokyo)
- 2018 Wada Akiko ART HOBBY EXPO, Seibu Shibuya (Tokyo)
- 2018 Heisei no Okimiyage ~ Heisei Umare no Watashitachi Ga Kono Jidai ni Nokoshitaimono, 100creators (Tokyo)
- 2019 SHIBUYA STYLE vol.13, Seibu Shibuya (Tokyo)
- 2019 [Muroto Shizen no ie](#), National MUROTO Youth Outdoor Learning Center (Kochi)
- 2020 DEPARTURE 2020, Tokyo University of the Arts Design Department, Daikanyama Tsutaya Books (Tokyo)
- 2021 Ima Koko de Yokuikiru, ALT, MORIO Gallery (Tokyo)
- 2022 [KUMA EXHIBITION 2022](#), Kuma Foundation, ANB Tokyo (Tokyo)

**[Awards & Grants]**

- 2017 Geidai Art in Marunouchi GAM Award Winner
- 2021 Kuma Foundation 5<sup>th</sup> Generation Creators Scholarship Grant

**[Others]**

- 2017 Art Institute Marunochi 2017, Tokyo University of the Arts, Mitsubishi Estate (Tokyo) Live Painting

- 2018 NTT DOCOMO, Inc Promotional Event “dusty car” (Tokyo) Project Co-Ordination  
 2018 Marunouchi 15-chome Project (Tokyo) Live Painting  
 2018 Art Institute Marunochi 2018, Tokyo University of the Arts, Mitsubishi Estate (Tokyo)  
 Live Painting  
 2019 MOV ICHI, Shibuya Hikarie (Tokyo) Live Painting  
 2019 [Muroto Shizen no ie](#), National MUROTO Youth Outdoor Learning Center (Kochi) Live  
 Painting  
 2019 Ringo Shiina Music Video, “Niwatori to Hebi to Buta”, “Snake Tank” Art Designer  
 2021 Ima Koko de Yokuikiru, ALT, MORIO Gallery (Tokyo) Curation & Exhibition

### Exhibition Details

Exhibition Title | Akihiro Hasegawa Solo Exhibition, *Yomogi & COMP*

Exhibiting Artist | Akihiro Hasegawa (長谷川彰宏)

Dates | June 25 (Sat) to August 6 (Sat), 2022

\* Partial exhibition changeover scheduled to occur during the exhibition period.

\* Closed on Sundays and Mondays

Venue | √K Contemporary (Root K Contemporary) B1F and 1F

Address: Minamicho 6, Shinjuku-ku, Tokyo

Tel: 03-6280-8808

Email: [info@root-k.jp](mailto:info@root-k.jp)

URL : <https://root-k.jp/en>

Exhibition HP | [https://root-k.jp/exhibitions\\_en/akihiro\\_hasegawa\\_exhibition\\_2022/](https://root-k.jp/exhibitions_en/akihiro_hasegawa_exhibition_2022/)

Admission | Free

Organizer | √K Contemporary

※Depending on the state of COVID-19, business days and hours are subject to change.  
 Please check updates on the √K Contemporary website, Facebook, Instagram, or Twitter  
 periodically for updates.

---

### About √K Contemporary

Guided by the notion that new art is generated from years of refinement, √K Contemporary deals mainly with contemporary art from the post-war period onwards. With an ethos colored by its roots in traditional art, √K Contemporary hosts and organizes various unique exhibitions and events that aim to provoke, stimulate, and evoke new thoughts, while simultaneously surpassing categorical restraints imposed by temporal and socially held differences. In conserving their acts, the gallery hopes to place and pave their way towards a future art scene. Manifesting this notion, the 300sqm gallery space was envisioned as a "gallery from space", where works are shown with new values and viewed with new eyes. With innovation at its heart,

Press Release  
June 2022

 Contemporary

√K Contemporary strives to become the next-generation art space that represents "the present of the future".

Official Website: <https://root-k.jp/en>

TW : @rk\_contemporary | FB : @rootkcontemporary | IG : @rk\_contemporary

---

For all Press & Media Related Inquiries

Contact: Naoko Watanabe, Aisei Tamura

√K Contemporary (Managed by SEI-RIN Co.,Ltd.)

6 Minamicho, Shinjuku-ku, Tokyo, 162-0836

Tel: (+81) (0)3-6280-8808 | Fax: (+81) (0)3-6280-8809 | Email: [pr@sei-rin.com](mailto:pr@sei-rin.com)